

“Early Indicators of Hospice Eligibility”

Dementias

- ◆ Having trouble walking without assistance
- ◆ Has very little meaningful verbal communication
- ◆ Unable to bathe or dress without assistance
- ◆ Cannot control bowel or bladder
- ◆ Has had eight loss, infections, falls, multiple emergency room trips last 12 months



Possible Diagnoses but not limited to:
 Alzheimer’s Disease, Parkinson’s Disease

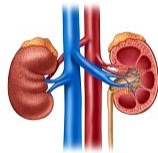
Heart Disease / CHF

- ◆ Swelling of legs and/or feet and/or arms
- ◆ Unable to carry on any physical activity without experiencing symptoms
- ◆ Tires easily (may not be unable to carry on conversation for very long)
- ◆ Symptoms are present even when resting
- ◆ Physician reports that the heart is very weak
- ◆ Recent cardiac hospitalization, not on transplant list, unable to tolerate heart surgery/not candidate for heart surgery



Kidney Disease

- ◆ Patient not seeking dialysis
- ◆ Patient is swollen most of the time
- ◆ Very weak and sometimes confused
- ◆ Patient not a candidate for kidney transplant



Lung Disease

- ◆ Short of breath at rest
- ◆ Unintentional weight loss
- ◆ Must sit straight up to breathe
- ◆ Rapid, pursed lips breathing
- ◆ Chronic CO2 retention
- ◆ Hospitalizations or ER visits for lung infections and/or respiratory failure or distress



Possible Diagnoses but not limited to: COPD, Emphysema, Lung Disease

Liver Disease

- ◆ Swollen abdomen
- ◆ Malnutrition, weight loss
- ◆ Abnormal clotting
- ◆ Draining of fluid from the abdomen by physician



Neurological Diseases

- ◆ Noticeable overall decline
- ◆ Tires very easily
- ◆ Choking when attempting to eat or drink within last 6 month
- ◆ (can still be eligible with a feeding tube)



Possible Diagnoses but not limited to: CVA, Parkinson’s Disease, ALS, MS

Secondary Condition: pneumonia

HIV/AIDS

- ◆ Weight loss
- ◆ Not responding to treatment
- ◆ Presence of other medical problems
- ◆ infections
- ◆ No HIV drug therapy or refuses the therapy
- ◆ CD4 count <25 or persistent viral load >100,00

